

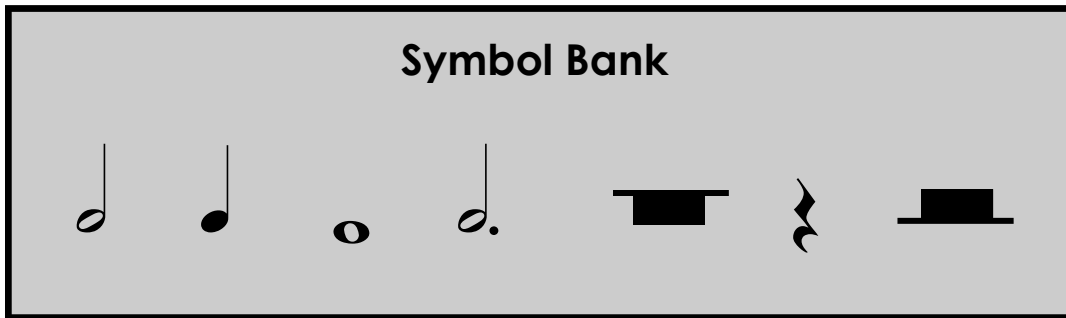
# Theory Quiz

Harp Level 1

## Notes & Rests

---

Complete each statement below. Draw the symbol of the note given in the box, then fill in the number of beats it gets in the blank. All notes are shown in the symbol bank.



A **quarter note**

gets \_\_\_\_\_ beat(s)

A **whole note**

gets \_\_\_\_\_ beat(s)

A **half note**

gets \_\_\_\_\_ beat(s)

A **dotted half note**

gets \_\_\_\_\_ beat(s)

A **half rest**

gets \_\_\_\_\_ beat(s)

A **whole rest**

gets \_\_\_\_\_ beat(s)

A **quarter rest**

gets \_\_\_\_\_ beat(s)

## Symbols

---

Draw a **circle** around the **treble clef** symbol.

Draw an **X** through the **bass clef** symbol.

Draw an **arrow** pointing to a **repeat sign**.

Draw a **triangle** around a **bar line**.

Draw a **square** around the **time signature**.



## Note Direction

---

Circle one word under each picture that tells which direction the notes are moving.



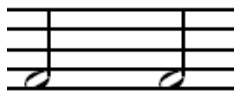
Up  
Down  
Repeat



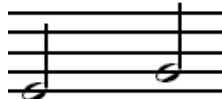
Up  
Down  
Repeat



Up  
Down  
Repeat



Up  
Down  
Repeat



Up  
Down  
Repeat

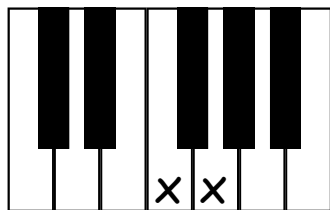


Up  
Down  
Repeat

## Steps and Skips

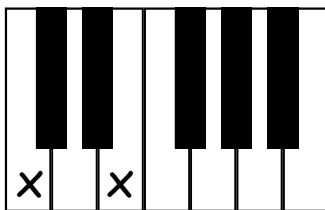
---

Circle one word under each picture.



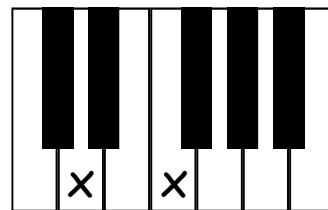
Step

Skip



Step

Skip



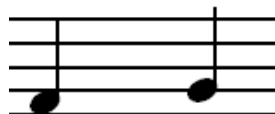
Step

Skip



Step

Skip



Step

Skip



Step

Skip

## Dynamic Symbols

---

Cross out two words that **do not belong** under each symbol.

*f*

forte

piano

loud

soft

*p*

forte

piano

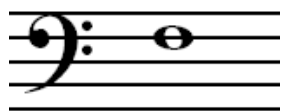
loud

soft

## Note Names

---

Write the name of the note on the line under each picture.



\_\_\_\_\_



\_\_\_\_\_



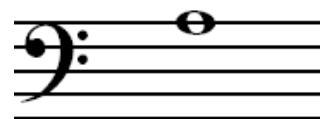
\_\_\_\_\_



\_\_\_\_\_



\_\_\_\_\_



\_\_\_\_\_

## Short Answer

---

Write the answer to each question in the blanks.

The red string is what note name?

\_\_\_\_\_

The black string is what note name?

\_\_\_\_\_

What fingers do you NOT play the harp with?

\_\_\_\_\_

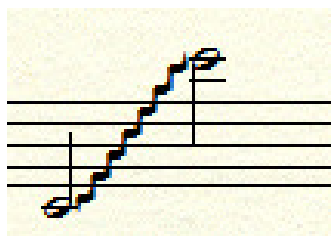
What two types of harps are there?

\_\_\_\_\_

Where should the thumbs be in relation to the other fingers?

\_\_\_\_\_

What does this symbol say to do?



\_\_\_\_\_

\_\_\_\_\_