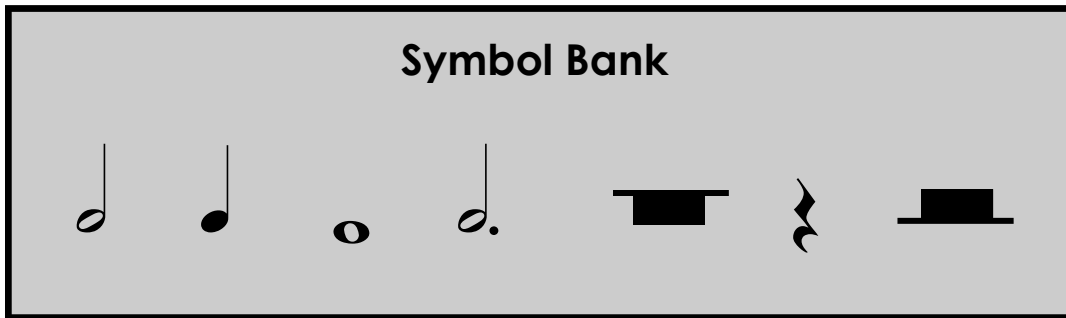


Theory Quiz

Strings Level 1

Notes & Rests

Complete each statement below. Draw the symbol of the note given in the box, then fill in the number of beats it gets in the blank. All notes are shown in the symbol bank.



A **quarter note**

gets _____ beat(s)

A **whole note**

gets _____ beat(s)

A **half note**

gets _____ beat(s)

A **dotted half note**

gets _____ beat(s)

A **half rest**

gets _____ beat(s)

A **whole rest**

gets _____ beat(s)

A **quarter rest**

gets _____ beat(s)

Symbols

Draw a **circle** around the **treble clef** symbol.

Draw an **X** through the **bass clef** symbol.

Draw an **arrow** pointing to a **repeat sign**.

Draw a **triangle** around a **bar line**.

Draw a **square** around the **time signature**.



Note Direction

Circle one word under each picture that tells which direction the notes are moving.



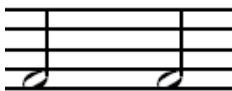
Up
Down
Repeat



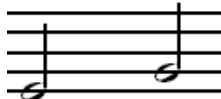
Up
Down
Repeat



Up
Down
Repeat



Up
Down
Repeat



Up
Down
Repeat



Up
Down
Repeat

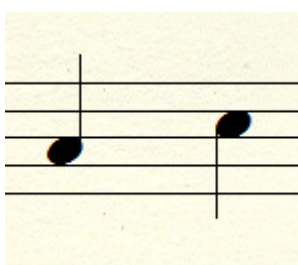
Steps and Skips

Circle one word under each picture.



Step

Skip



Step

Skip



Step

Skip



Step

Skip



Step

Skip



Step

Skip

Dynamic Symbols

Cross out two words that **do not belong** under each symbol.

f

forte

piano

loud

soft

p

forte

piano

loud

soft

String Names

List the names of the open strings, from lowest to highest.

Note Names

Write the name of the note on the line under each picture.









