

# Theory Quiz

## Harp Level 2

### Notes & Rests

---

Complete each statement below. Draw the symbol of the note given in the box, then fill in the number of beats it gets in the blank.

A **quarter note**

gets \_\_\_\_\_ beat(s)

A **whole note**

gets \_\_\_\_\_ beat(s)

A **half note**

gets \_\_\_\_\_ beat(s)

A **dotted half note**

gets \_\_\_\_\_ beat(s)

A **half rest**

gets \_\_\_\_\_ beat(s)

A **whole rest**

gets \_\_\_\_\_ beat(s)

A **quarter rest**

gets \_\_\_\_\_ beat(s)

### Accidentals

---

Draw a symbol next to each word on the left. Then draw a line to match it to a

Flat Sign

Raises a note by a half-step

Sharp Sign

Cancels a sharp or flat

Natural Sign

Lowers a note by a half-step

## Definitions

---

Cross out two words that **do not belong** under each symbol.

*p*

*f*



piano  
forte  
loud  
soft

piano  
forte  
loud  
soft

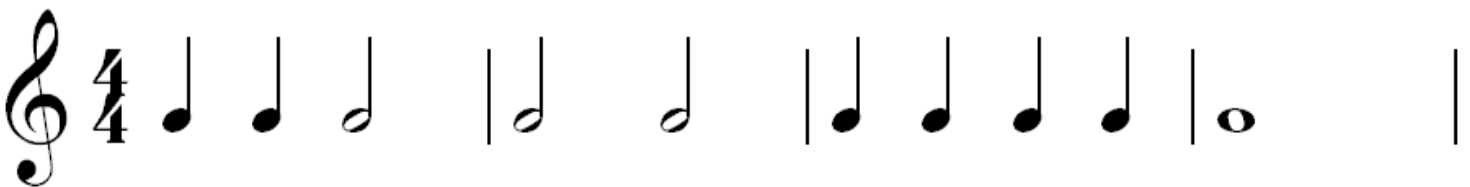
legato  
staccato  
detached  
smooth

legato  
staccato  
detached  
smooth

## Counting

---

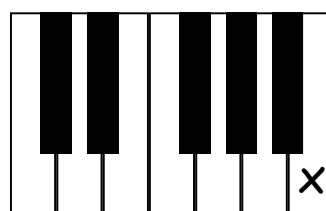
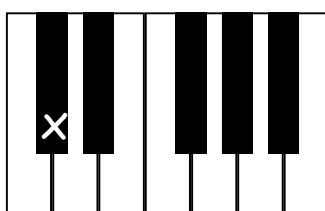
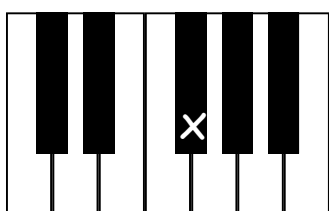
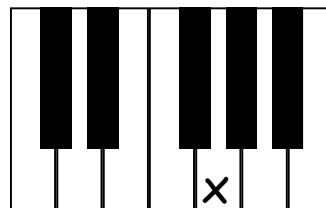
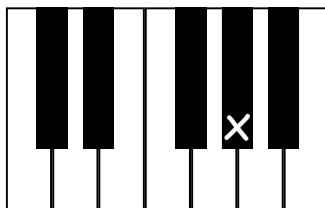
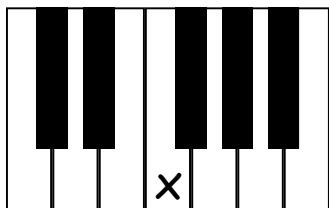
Write in counting below each line.



## Key Names

---

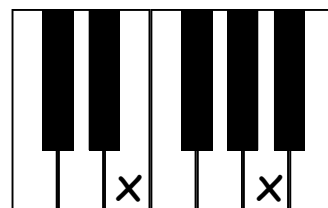
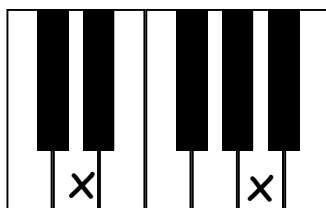
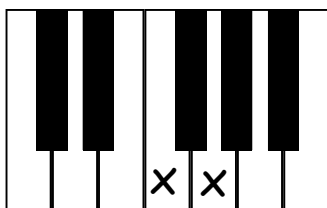
Write the name of each key on the line below each picture.



## Intervals

---

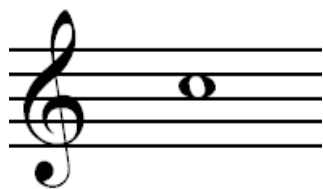
Write the name of each interval on the line below each picture (ex. 2nd, 3rd, etc.).



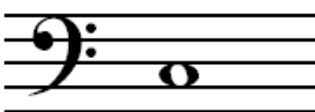
## Note Names

---

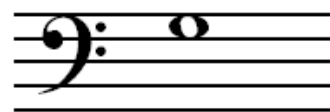
Write the name of the note on the line under each picture.



\_\_\_\_\_



\_\_\_\_\_



\_\_\_\_\_



\_\_\_\_\_



\_\_\_\_\_

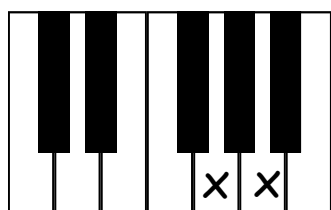


\_\_\_\_\_

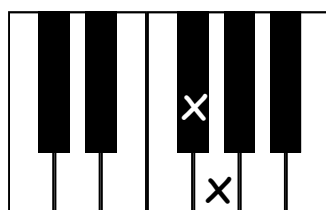
## Whole and Half Steps

---

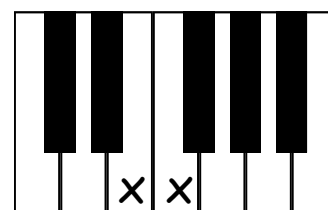
Circle one word under each picture that tells how far it is from one X to the next X.



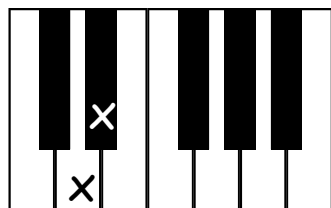
Whole Step  
Half Step



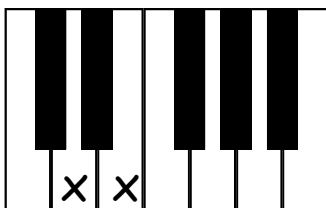
Whole Step  
Half Step



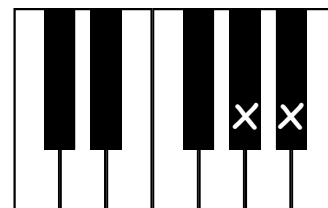
Whole Step  
Half Step



Whole Step  
Half Step



Whole Step  
Half Step



Whole Step  
Half Step