

Theory Quiz

Strings Level 3

Terms & Symbols

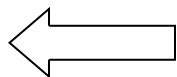
In each row of the table below, one blank has been filled in for you. Complete the other two so that each row has an Italian term, it's symbol and it's English definition.

Italian Term	Symbol	English Definition
		medium loud
mezzo piano		
	p	
		loud

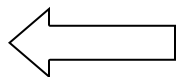
Time Signatures

Explain what each number in this time signature means:

3



4



Counting

Write in counting below each line.



Ties and Slurs

Circle the symbol that appears in each example.



Tie
Slur



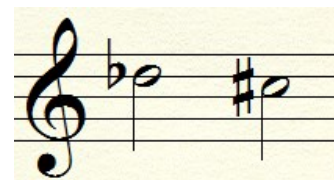
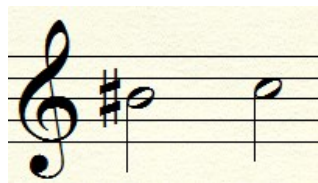
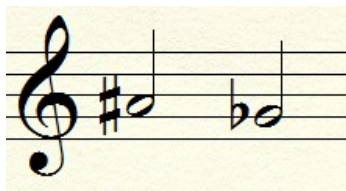
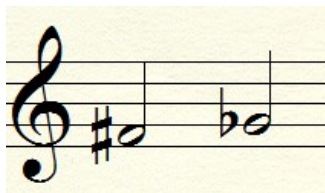
Tie
Slur



Tie
Slur

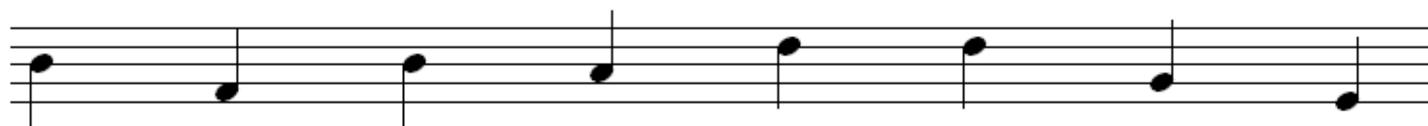
Enharmonics

Circle the pairs of notes that are correct enharmonic equivalents (they tell you to sing the same pitch).



Accidentals

Add an accidental to make each note on the staff match its description below.
(Note: every note should have a symbol next to it, including natural notes.)



B flat

F sharp

B flat

A natural

D flat

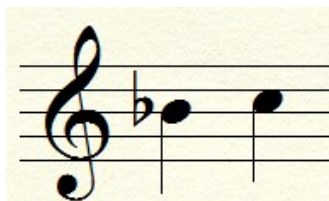
D natural

G sharp

E flat

Whole and Half Steps

Circle the word that describes the distance between each pair of notes.



Whole Step

Half Step



Whole Step

Half Step



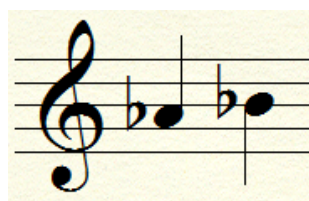
Whole Step

Half Step



Whole Step

Half Step



Whole Step

Half Step

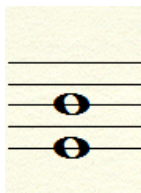


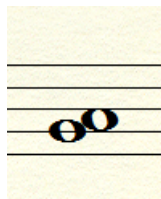
Whole Step

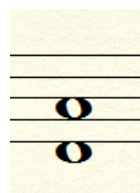
Half Step

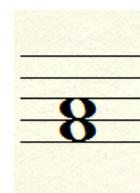
Intervals

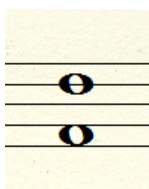
Write the name of each interval on the line below each picture (ex. 2nd, 3rd).

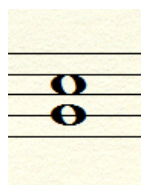


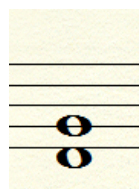


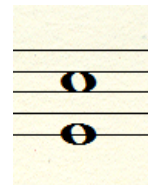












Note Names

Write the name of each note on the lines under the pictures.