

Theory Quiz

Strings Level 4

Terms & Symbols

In each row of the table below, one blank has been filled in for you. Complete the other two so that each row has an Italian term, it's symbol and it's English definition.

Italian Term	Symbol	English Definition
mezzo piano		
		soft
	<i>f</i>	
		medium loud
	<i>pp</i>	
fortissimo		

Give a definition for each of these symbols or terms:

8^{va}



D.C. al Fine

Time Signatures

Explain what each number in this time signature means:

5 ← _____

4 ← _____

Counting

Write in counts below each line.

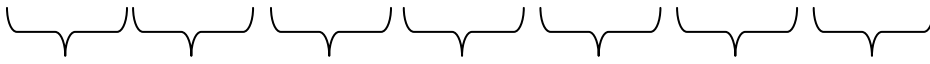
$\frac{4}{4}$ ♩. ♪ ♪ ♪ ♪ | ♪ ♪ ♪ ♪ | ♪ ♪ ♪. ♪ | ♪

$\frac{3}{4}$ ♩ ♪ ♪ ♪ | ♪. ♪ ♪ | ♪ ♪ ♪ | ♪ ♪ ♪ | ♪ ♪ ♪ | ♪ ♪ ♪

$\frac{4}{4}$ ♩ | ♪ ♪ ♪ ♪ | ♪ ♪ ♪ ♪ | ♪ ♪ ♪ ♪ | ♪. ♪ ♪ ♪ | ♪.

Scales

Label the distance between each step in the scales below as "W" for a whole step or "H" for a half step. Then decide if the patterns spell a major or natural minor scale and circle the answer to the right of the scale.



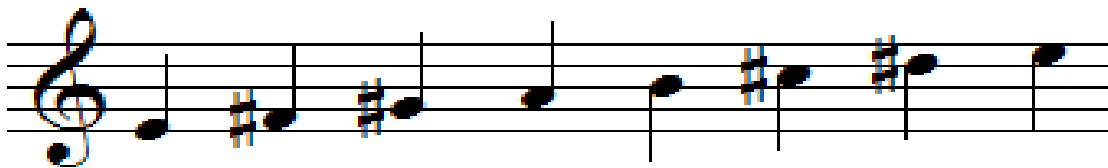
Major

Natural
Minor



Major

Natural
Minor

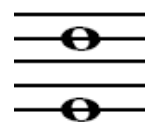
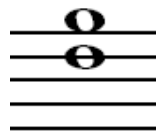


Major

Natural
Minor

Intervals

Write the name of each interval on the line below each picture (ex. 2nd, 3rd).





Note Names

Write the name of each note on the lines under the pictures.

