

Theory Quiz

Keyboard Level 4A

Key Signature

Identify the key signature of the following piece: _____ Major

Auld Lang Syne

Andante Traditional

mf

Write the major scale that corresponds to the above key. Use accidentals for any sharp and flat notes—do not write a key signature.

I and V7 Chords

Identify each of the circled chords as a I or V7 chord. Write the roman numeral in the box below each chord.

Andante Traditional

mf

Intervals

Write in the name of the interval (ex. 2nd, 5th) under each pair of circled notes.

mp

ff

Terms and Symbols

Write (1) the Italian term or symbol name, and (2) an English definition, in the blanks below for each circled term or symbol.

Auld Lang Syne

#1 **Andante** Traditional

#2 *mf* #3 #4 *f*

#5 #7

#6

The image shows a musical score for 'Auld Lang Syne' in 4/4 time. The score consists of two systems of staves. The first system has a treble staff with a melody and a bass staff with accompaniment. The second system continues the melody and accompaniment. Seven specific terms or symbols are circled and numbered for identification: #1 is the tempo marking 'Andante'; #2 is the dynamic marking 'mf'; #3 is a crescendo hairpin symbol; #4 is the dynamic marking 'f'; #5 is a crescendo hairpin symbol; #6 is a crescendo hairpin symbol; and #7 is a crescendo hairpin symbol.

Italian Term / Symbol Name

English Definition

#1: Andante

#2: _____

#3: _____

#4: _____

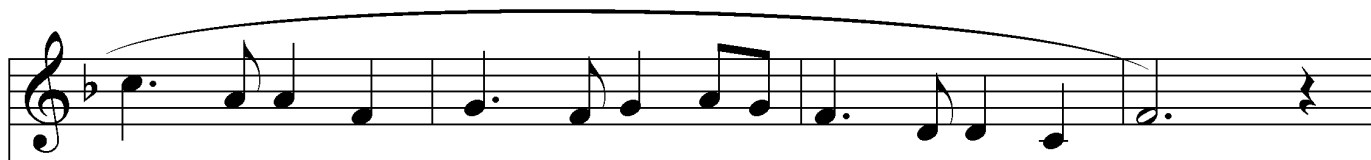
#5: _____

#6: _____

#7: _____

Note Names

Write in the name of each of the notes below. Be sure to identify any sharps or flats in the note names (don't forget to look at your key signature!)



Counting

Write in the counting for both lines of music below.

Andante Traditional

The first line of music consists of two staves. The top staff is in treble clef with a key signature of one flat and a 4/4 time signature. It contains a melodic line of 11 notes under a slur, starting on a quarter rest. The notes are: B-flat (quarter), A (quarter), G (quarter), F (quarter), E (quarter), D (quarter), C (quarter), B-flat (quarter), A (quarter), G (quarter), and F (quarter). The bottom staff is in bass clef with a key signature of one flat and a 4/4 time signature. It contains accompaniment: a quarter rest, followed by a chord of F2-A2-C3 (quarter), a chord of G2-B2-D3 (quarter), a chord of A2-C3-E3 (quarter), and a chord of B2-D3-F3 (quarter).

The second line of music consists of two staves. The top staff is in treble clef with a key signature of one flat and a 4/4 time signature. It contains a melodic line of 11 notes under a slur, starting on a quarter rest. The notes are: B-flat (quarter), A (quarter), G (quarter), F (quarter), E (quarter), D (quarter), C (quarter), B-flat (quarter), A (quarter), G (quarter), and F (quarter). The bottom staff is in bass clef with a key signature of one flat and a 4/4 time signature. It contains accompaniment: a chord of F2-A2-C3 (quarter), a chord of G2-B2-D3 (quarter), a chord of A2-C3-E3 (quarter), and a chord of B2-D3-F3 (quarter).