

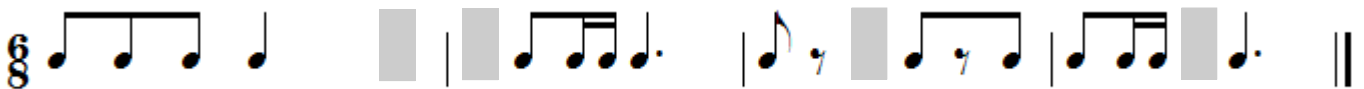
# Theory Quiz

## Keyboard Level 7

### Rhythms

---

Each measure below can be completed by adding one note. Fill in an appropriate note or rest in each gray square below.

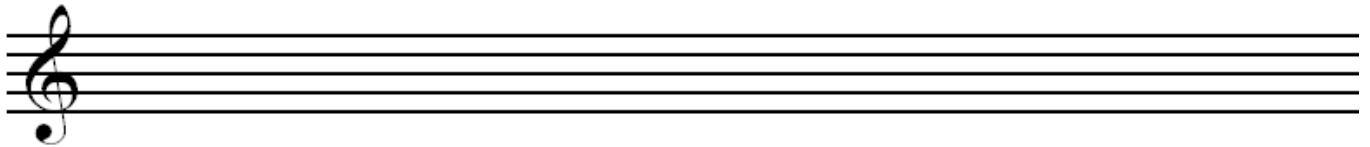


### Scales

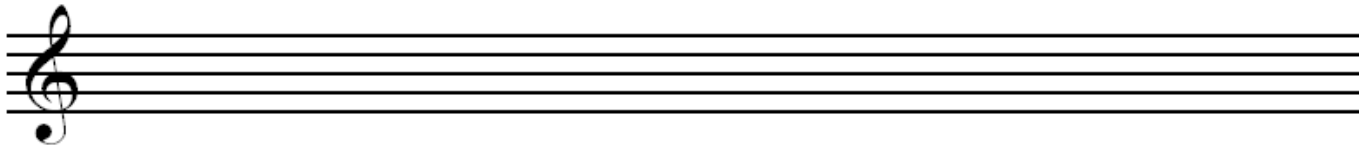
---

Write the given scales on the staff below. Use accidentals for sharp and flat notes—do not add a key signature.

E $\flat$  Major



G natural minor



a harmonic minor



## Key Signatures

---

Identify each major key signature below and list its relative minor.



Major Key: \_\_\_\_\_  
Relative Minor: \_\_\_\_\_



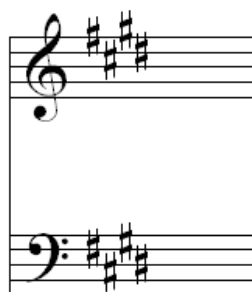
Major Key: \_\_\_\_\_  
Relative Minor: \_\_\_\_\_



Major Key: \_\_\_\_\_  
Relative Minor: \_\_\_\_\_



Major Key: \_\_\_\_\_  
Relative Minor: \_\_\_\_\_



Major Key: \_\_\_\_\_  
Relative Minor: \_\_\_\_\_

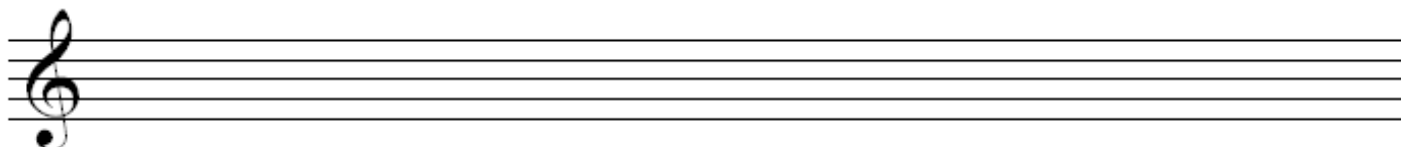


Major Key: \_\_\_\_\_  
Relative Minor: \_\_\_\_\_

## Double Accidentals

---

Write each note and accidental listed on the staff below. Next to it, draw a note that is an enharmonic equivalent.



F Double Sharp

B Double Flat

C Double Sharp

E Double Flat

## Triads

---

Identify each triad. Triads may be major, minor, augmented or diminished.



\_\_\_\_\_



\_\_\_\_\_



\_\_\_\_\_

Draw each triad on the staff, using accidentals if necessary. (Do not add a key signature).



B Major



D minor



F Augmented

## Analysis

---

Identify each chord below as a I, IV, V, V7, ii or vi chord (be sure to look at your key signature!) Write your answers in the boxes below the chords.



## Intervals

---

Identify each of the intervals below. Your answer should have a quality ("M" for major, "m" for minor or "P" for perfect) and a number. One example is given.



m3



Draw a second note to complete the intervals given below. All intervals are ascending. Use accidentals if necessary—do not add a key signature.



Minor 3rd



Perfect 5th



Minor 2nd



Major 6th



Perfect 4th



Major 7th