

Theory Quiz

Keyboard Level 8

Rhythms

Each measure below can be completed by adding one note. Fill in an appropriate note or rest in each gray square below.

A musical staff in 2/4 time. The first measure contains a quarter note followed by a gray square. The second measure contains a quarter note followed by a gray square. The third measure contains two eighth notes followed by a gray square. The fourth measure contains a triplet of eighth notes followed by a gray square. The fifth measure contains a quarter note followed by a gray square. The sixth measure contains a quarter note followed by two eighth notes followed by a gray square. The seventh measure contains a triplet of eighth notes followed by a gray square. The eighth measure contains a quarter note followed by a gray square.

A musical staff in 3/8 time. The first measure contains a quarter note followed by two eighth notes followed by a gray square. The second measure contains a quarter note followed by a gray square. The third measure contains a quarter note followed by a gray square. The fourth measure contains a quarter note followed by two eighth notes followed by a gray square. The fifth measure contains a quarter note followed by a gray square. The sixth measure contains a quarter note followed by two eighth notes followed by a gray square. The seventh measure contains a quarter note followed by a gray square. The eighth measure contains a quarter note followed by a gray square.

Scales

Write the given scales on the staff below. Use accidentals for sharp and flat notes—do not add a key signature.

Db Major

An empty musical staff with a treble clef, intended for writing the Db Major scale.

G harmonic minor

An empty musical staff with a treble clef, intended for writing the G harmonic minor scale.

E melodic minor (please draw ascending and descending scale)

An empty musical staff with a treble clef, intended for writing the E melodic minor scale, both ascending and descending.

Minor Scales

Identify the major scale, then name and write each corresponding natural minor scale.

_____ Major



Relative Minor:

_____ natural minor



Parallel Minor:

_____ natural minor



Seventh Chords

Identify each 7th chord as a Major, Dominant or Minor.



Major
Dominant
Minor



Major
Dominant
Minor



Major
Dominant
Minor



Major
Dominant
Minor

Triads

Draw each triad on the staff, using accidentals if necessary. (Do not add a key signature). All triads should be written in root position.



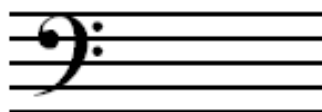
E Diminished



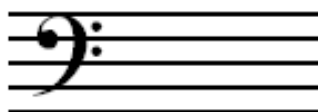
C Minor



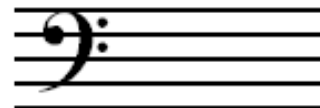
G Augmented



E \flat Major



F Augmented



B Diminished

Inversions

Draw each triad on the staff in the given inversion. Use accidentals if necessary. (Do not add a key signature.)



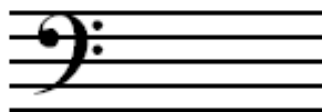
B Major
1st Inversion



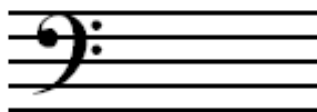
E Minor
2nd Inversion



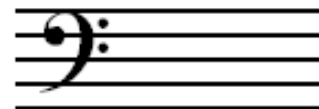
C Diminished
1st Inversion



G Augmented
1st Inversion



F Major
2nd Inversion



B \flat Minor
2nd Inversion

Intervals

Draw a second note to complete the intervals given below. **All intervals should be ascending.** Use accidentals if necessary. (Do not add a key signature.)



Perfect 4th



Diminished 5th

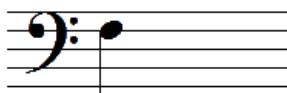


Minor 6th

Draw a second note to complete the intervals given below. **All intervals should be descending.** Use accidentals if necessary. (Do not add a key signature.)



Perfect 4th



Minor 3rd



Major 2nd

Analysis

Identify each group of circled notes as a chord. Write your answer in the box below each measure using roman numerals. Be sure to check your key signature!