

Modes

Identify the mode of each scale below.

_____ Mode 

_____ Mode 


_____ Mode 

_____ Mode 

Seventh Chords

Identify each 7th chord as a Major, Dominant, Minor, Half Diminished or Fully Diminished.




- Major
- Dominant
- Minor
- Half Diminished
- Fully Diminished

- Major
- Dominant
- Minor
- Half Diminished
- Fully Diminished

- Major
- Dominant
- Minor
- Half Diminished
- Fully Diminished

- Major
- Dominant
- Minor
- Half Diminished
- Fully Diminished

- Major
- Dominant
- Minor
- Half Diminished
- Fully Diminished

Intervals (1 point each)

Draw a second note to complete the intervals given below. Use accidentals if necessary. (Do not add a key signature.)



Augmented 7th
Ascending



Perfect 4th
Ascending



Minor 2nd
Descending



Major 2nd
Ascending



Diminished 4th
Descending



Minor 7th
Ascending

Inversions

Draw each triad on the staff in the given inversion. Use accidentals if necessary. (Do not add a key signature.)



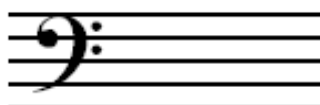
B Major
Root



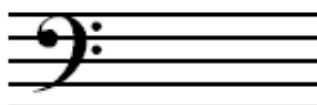
E \flat Minor
1st Inversion



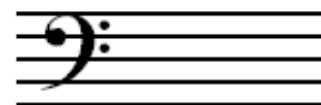
D \flat Augmented
Root



B Diminished
Root



D Augmented
2nd Inversion



F Minor
1st Inversion

Analysis

Identify the key signature of the excerpt below. Then, identify each of the chords by Roman numeral (I, iii, V, etc.). Write your answers in the box below each chord. Disregard the notes that are X'ed out when analyzing each chord.

Key of: _____

Bach, Gib dich zufreunden und sei stille
